



February 3, 2012

Market History:

After a negative beginning, the Indian equity market rallied tremendously to yet another week of positive closing. NSE Nifty appreciated 121 points (+2.33%) and settled at 5325.85; BSE Sensex closed at 17604.96, gaining 370 points (+2.15%).

The trend remained almost composed across the global markets, with Taiwan leading the gainers with 6.10% gain, followed by Germany (+3.67%).

The FIIs are continuing to be net buyers. They bought equity worth INR 4793 crore, taking the total investment for the whole year to INR 15317.10 crore.

Technical Outlook:

Indian market indices have appreciated nearly 18% from the recent low made in mid-December last year. In the week that went by, the benchmark indices - NSE Nifty and BSE Sensex - managed to break through the 200-days Moving Average for the first time since February 2011. This can be viewed as a positive sign for the bulls, but the chances for any profit-booking cannot be ruled out, for most of the momentum indicators are trading in the overbought territory.

The first support for NSE Nifty for the week ahead is seen at 5190, followed by 5130 - which is the 200-days moving average for the index. On upside the first resistance for the market is expected at 5405, followed by 5610.

Indian Market Indices

Index	Last Close	Change	% Change
S&P CNX NIFTY	5325.85	121.15	2.33%
SENSEX	17604.96	370.98	2.15%
S&P CNX 500	4188.45	103.1	2.52%
BANK NIFTY	10133.65	320	3.26%
BSE MID-CAP	6046.1	173.74	2.96%
BSE SMALL-CAP	6686.55	194.86	3.00%
BSE AUTO	9523.22	325.89	3.54%
BSE-CG	10259.55	-100.69	-0.97%
BSE-CD	5832.41	-168.05	-2.80%
BSE-FMCG	4120.75	56.88	1.40%
BSE-HC	6411.72	150.49	2.40%
BSE-IT	5912.4	190.66	3.33%
BSE METALS	11874.99	298.66	2.58%
BSE OIL & GAS	8689.19	147.77	1.73%
BSE POWER	2161.35	39.32	1.85%
BSE REALTY	1784.17	81.19	4.77%
BSE-PSU	7485.77	76.77	1.04%

NSE Nifty Top Gainers

Index	Last Close	Change	% Change
RELIANCE CAPITAL	373.9	31.2	9.10%
DLF	230.85	19.25	9.10%
JP ASSOCIATES	76.2	5.4	7.63%
SESA GOA	230.65	15.9	7.40%
HERO MOTORS	1952.9	134.45	7.39%

NSE Nifty Top Losers

Index	Last Close	Change	% Change
BHEL	264.75	-8.85	-3.23%
RELIANCE COM	93.7	-2.65	-2.75%
CAIRN INDIA	344.15	-8.3	-2.35%
L & T	1354.6	-26.9	-1.95%
PNB	962.8	-8.35	-0.86%

Global Majors

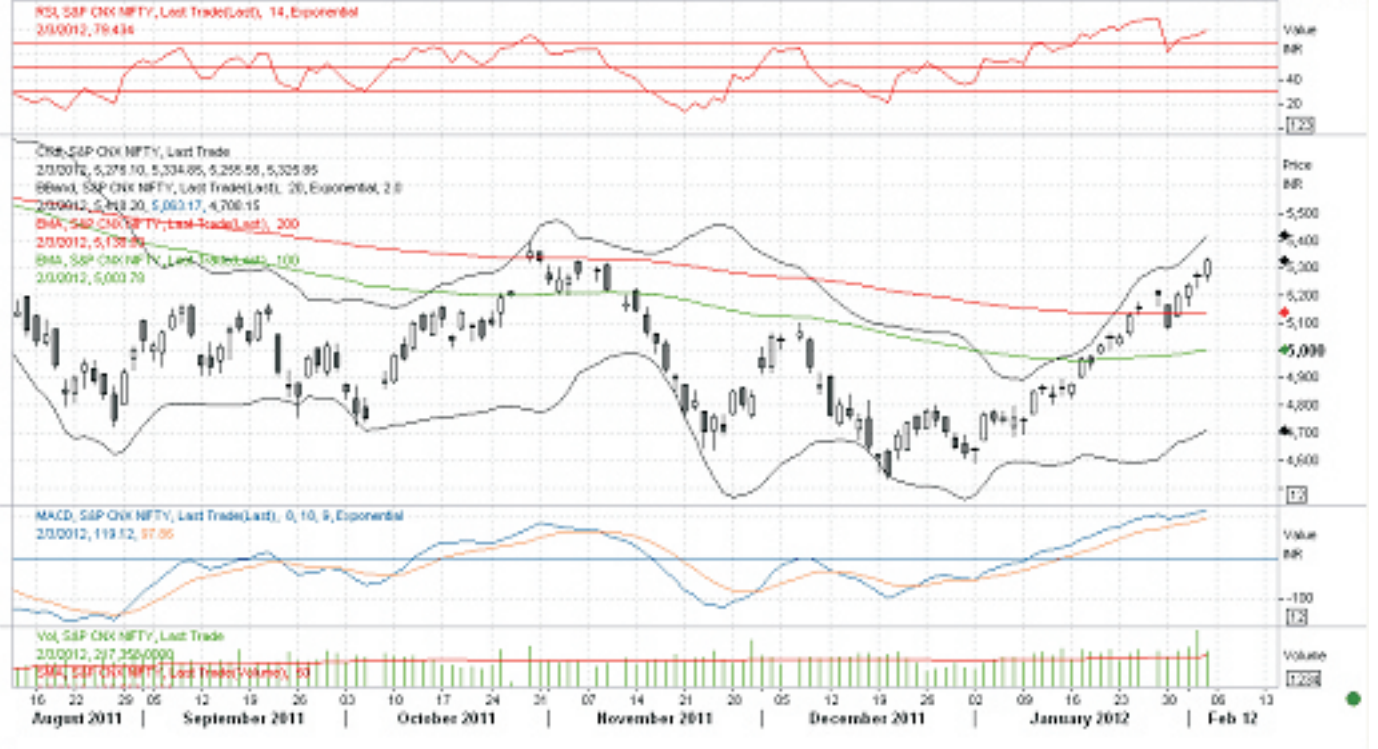
Country	Index	Last Close	Change	% Change
US	DJ INDU AVERAGE	12777*	116.54	0.92%
UK	FTSE	5862.48*	129.03	2.25%
RUSSIA	RTS INDEX	1618.62*	51.35	3.28%
FRANCE	CAC 40 INDEX/d	3399.17*	80.41	2.42%
GERMANY	XETRA DAX PF/d	6750.91*	238.93	3.67%
JAPAN	NIKKEI 225 INDEX	8831.93	-9.29	-0.11%
KOREA	KOSPI	1972.34	7.51	0.38%
HONGKONG	HANG SENG INDE/d	20756.98	255.31	1.25%
CHINA	SSE COMPOSITE/d	2330.40	11.29	0.49%
TAIWAN	TAIWAN WEIGHTED	7674.99	441.30	6.10%
ARGENTINA	BUSE Merval IN/d	2832.6*	1.02	0.04%
BRAZIL	BVSP BOVESPA IND	65163.77*	2259.57	3.59%
MEXICO	MXSE IPC GRAL /d	37711.16*	526.45	1.42%
SPAIN	IBEX 35 INDEX	8816*	158.70	1.83%
GREECE	Athens General/d	767.12*	21.45	2.88%
HUNGARY	BUDAPEST SE INDX	19607.22*	321.07	1.66%
PORTUGAL	PSI 20 INDEX/d	5429.31*	-5.58	-0.10%
SAUDI ARABIA	TASI/d	6663.48	157.91	2.43%
KUWAIT	KSE Index	5856.40	4.20	0.07%
Italy	FTSE MIB	16404.93*	458.06	2.87%

*Week's trading not ended yet

Weekly performance

Daily S&P CNX NIFTY

8/11/2011 - 2/14/2012 (BOM)



Team Research:

Binu Joseph

Assistant Vice President

(binujoseph@jrg.co.in)

Fundamental Analysis:

Girish Kumar (Manager)

(girish@jrg.co.in)

Tapan Trivedi (Sr. Analyst)

(tapan.trivedi@jrg.co.in)

Technical Analysis:

A.A. Afzal Hussain (Asst. Manager)

(afzal@jrg.co.in)

Praveen K.C. (Sr. Analyst)

(praveen.kc@jrg.co.in)

Assisted by:

Thabassum Nazeer (Officer - HNI Relations)

(thabassum.nazeer@jrg.co.in)

Prepared By:

*A.A. Afzal Hussain
JRG Equity Research*

Disclaimer:

This document has been prepared by JRG Securities Ltd.

The information presented in this document shall not be regarded as an offer/recommendation to buy or sell securities. There is the risk of loss involved in using the information for investment purpose. The readers are urged to exercise their own judgement in investment and trading.

* There are rates, based on Technical levels. Any major fundamental news or market sentiment can make these levels irrelevant or ineffective. Opinions expressed in this article are the independent views of the author(s). The informations, opinions and analysis contained are collected from sources believed to be reliable, but no representation, expressed or implied, is made as to its accuracy, completeness or correctness.

* STRICTLY FOR PRIVATE CIRCULATION ONLY. Unauthorized use, disclosure, distribution or copying of this private email by anyone other than the intended recipient is strictly prohibited.

JRG House, Ashoka Road, Kaloor, Kochi Kerala – 682017

Phone: 0484 27963211 Fax: 0484 2409922

Website: www.inditrade.com

Email: jrg.research@jrg.co.in



**Weekly
Report** **indi**trade