



Market History:

Indian markets extended the weakness to yet another week – NSE Nifty settled at 4710.05, tumbling 195 points (-3.99%); BSE Sensex crashed 676 points (-4.13%) and closed at 15695.433. This is the lowest weekly closing since the third quarter of 2009.

The trend was severe among most of the global peers with Italy leading the crowd, plummeting 10.39%, followed by Spain (-8.17%) and Russia (-7.52%) (all the indices were yet to close while preparing this report). US Dow Jones industrial Average fell 4.57%.

The crash in the domestic market was contributed heavily by the FIIs who emerged sellers for INR 3640.40 crore during the last week, taking the total sales for the whole year to INR 2270.40 crore.

Technical Outlook :

Every effort for recovery failed to materialize and the Indian market indices continued the selling. The fact that the market has tested a major medium-term support and held the support during the last week's crash is giving glimpses of hope for the week ahead, even though any reliable indication if not available yet.

MACD is continuing with the bears, though its momentum is showing slight indications of a shift. Stochastic Oscillator is slightly recovering from the oversold region and so is the Money flow.

The critical support for Nifty for the week ahead is seen at 4630. The index has to hold above this for any recovery to pan out. The first resistance will be 4785, followed by 4865. The downside support is expected at 4550.

November 25, 2011

Indian Market Indices

Index	Last Close	Change	% Change
S&P CNX NIFTY	4710.05	-195.75	-3.99%
SENSEX	15695.43	-676.08	-4.13%
S&P CNX 500	3742.2	-126.85	-3.28%
BANK NIFTY	8488.6	-361.65	-4.09%
BSE MID-CAP	5612.63	-103.82	-1.82%
BSE SMALL-CAP	6049.39	-132.92	-2.15%
BSE AUTO	8362.86	-175.46	-2.05%
BSE-CG	9533.52	-17.49	-0.18%
BSE-CD	5777.9	-298.19	-4.91%
BSE-FMCG	3899.57	-175.45	-4.31%
BSE-HC	5932.02	13.49	0.23%
BSE-IT	5403.55	-210.58	-3.75%
BSE METALS	9874.97	-558.52	-5.35%
BSE OIL & GAS	7899.64	-399.25	-4.81%
BSE POWER	1894.01	-72.43	-3.68%
BSE REALTY	1579.3	-27.77	-1.73%
BSE-PSU	6692.29	-141.61	-2.07%

NSE Nifty Top Gainers

Index	Last Close	Change	% Change
L&T	1265.95	21.35	1.72%
MARUTI SUZUKI	949.95	9.35	0.99%
GAIL	384.8	3.5	0.92%
TATA MOTORS	171.85	1.55	0.91%
CIPLA	315.9	1.8	0.57%

NSE Nifty Top Losers

Index	Last Close	Change	% Change
SAIL	82.1	-12.2	-12.94%
RELIANCE CAPITAL	276	-30.4	-9.92%
JINDAL STEEL	487.25	-49.4	-9.21%
HINDALCO	113.5	-10.2	-8.25%
STERLITE P	100.05	-8.15	-7.53%

Global Majors

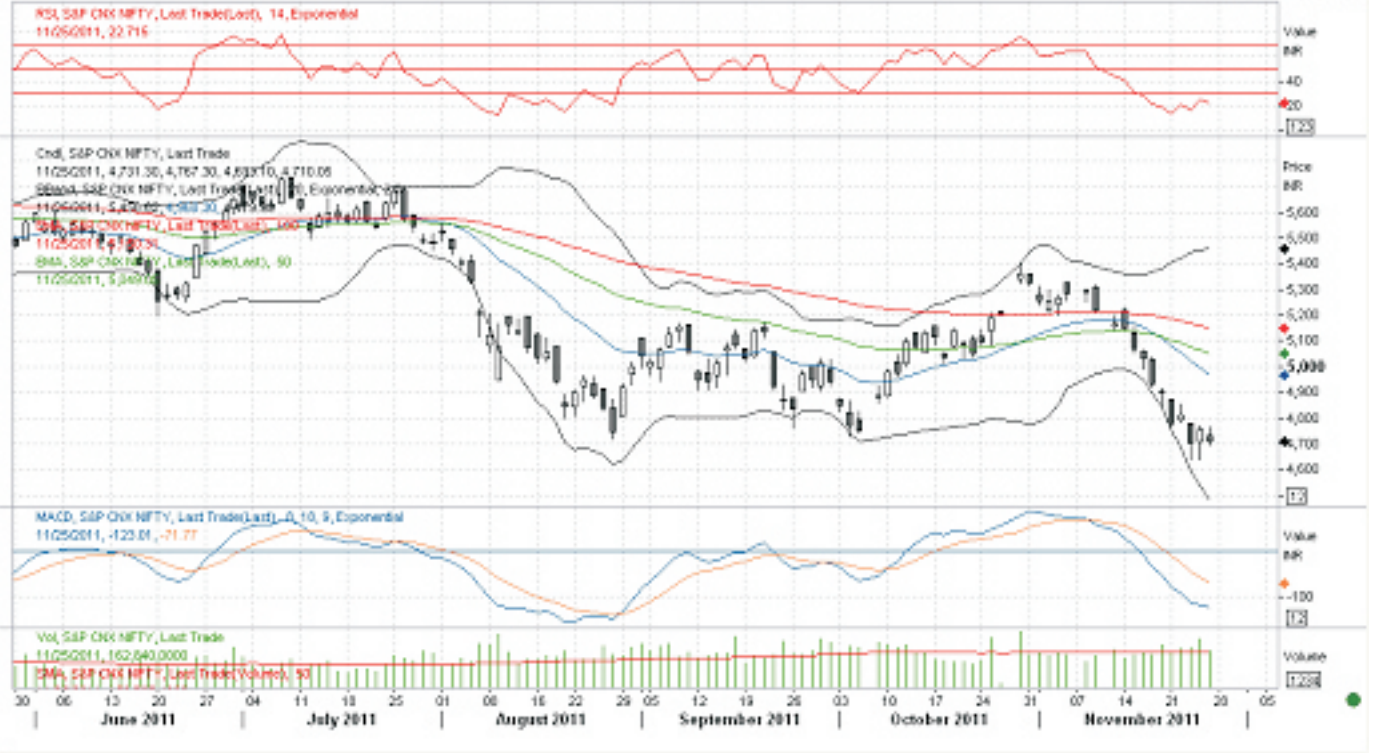
Country	Index	Last Close	Change	% Change
US	DJ INDU AVERAGE	11257.55*	-538.61	-4.57%
UK	FTSE	5127.6*	-235.34	-4.39%
RUSSIA	RTS INDEX	1382.52*	-112.40	-7.52%
FRANCE	CAC 40 INDEX/d	2808.93*	-188.08	-6.28%
GERMANY	XETRA DAX PF/d	5415.66*	-384.58	-6.63%
JAPAN	NIKKEI 225 INDEX	8160.01	-214.90	-2.57%
KOREA	KOSPI	1776.40	-62.77	-3.41%
HONGKONG	HANG SENG INDE/d	17689.48	-801.75	-4.34%
CHINA	SSE COMPOSITE/d	2380.22	-36.34	-1.50%
TAIWAN	TAIWAN WEIGHTED	6784.52	-449.26	-6.21%
ARGENTINA	BUSE MERVAL IN/d	2426.09*	-101.95	-4.03%
BRAZIL	BVSP BOVESPA IND	55279.88*	-1451.46	-2.56%
MEXICO	MXSE IPC GRAL /d	35323.6*	-960.60	-2.65%
SPAIN	IBEX 35 INDEX	7631.1*	-679.00	-8.17%
GREECE	Athens General/d	668.99*	-43.64	-6.12%
HUNGARY	BUDAPEST SE INDX	16220.5*	-809.64	-4.75%
PORTUGAL	PSI 20 INDEX/d	5138.87*	-303.21	-5.57%
SAUDI ARABIA	TASI/d	6086.10	-107.64	-1.74%
KUWAIT	KSE Index	5782.00	-75.80	-1.29%
Italy	FTSE MIB	13649.81*	-1582.75	-10.39%

*Week's trading not ended yet

Weekly performance

Daily S&P CNX NIFTY

5/30/2011 - 12/6/2011 (DOW)



Team Research:

Binu Joseph

Assistant Vice President

(binujoseph@jrg.co.in)

Fundamental Analysis:

Girish Kumar (Manager)

(girish@jrg.co.in)

Tapan Trivedi (Sr. Analyst)

(tapan.trivedi@jrg.co.in)

Technical Analysis:

A.A. Afzal Hussain (Asst. Manager)

(afzal@jrg.co.in)

Praveen K.C. (Sr. Analyst)

(praveen.kc@jrg.co.in)

Assisted by:

Thabassum Nazeer (Officer - HNI Relations)

(thabassum.nazeer@jrg.co.in)

Prepared By:

*A.A. Afzal Hussain
JRG Equity Research*

Disclaimer:

This document has been prepared by JRG Securities Ltd.

The information presented in this document shall not be regarded as an offer/recommendation to buy or sell securities. There is the risk of loss involved in using the information for investment purpose. The readers are urged to exercise their own judgement in investment and trading.

* There are rates, based on Technical levels. Any major fundamental news or market sentiment can make these levels irrelevant or ineffective. Opinions expressed in this article are the independent views of the author(s). The informations, opinions and analysis contained are collected from sources believed to be reliable, but no representation, expressed or implied, is made as to its accuracy, completeness or correctness.

* STRICTLY FOR PRIVATE CIRCULATION ONLY. Unauthorized use, disclosure, distribution or copying of this private email by anyone other than the intended recipient is strictly prohibited.

JRG House, Ashoka Road, Kaloor, Kochi Kerala – 682017

Phone: 0484 27963211 Fax: 0484 2409922

Website: www.inditrade.com

Email: jrg.research@jrg.co.in



**Weekly
Report** **indi**trade